

Fiche femelle Série VW 3.5 - 2.8mm - 2 pôles - 25 pcs

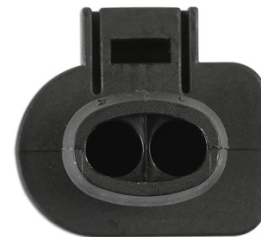
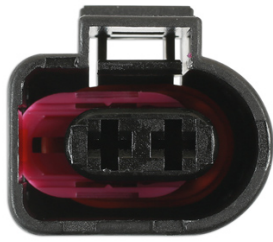
Sensors can be used in any area of the vehicle. Mainly used in the engine bay to protect circuits and important sensors for the engine management system. Sensors are protected by the waterproof seal supplied which is crimped onto the non-insulated terminal. Please use our range of Laser Professional Hand Tools part numbers -7293, 7002, 6547, 3932, 3984 & 4027.



Additional Information

- Connecteur Série Volkswagen 3.5
- Equivalent au code constructeur 1J0973722.
- Convient pour les câbles électriques de 0.5 -0.75mm²
- Cosses de remplacement disponibles sous la ref 37353 - Joints d'étanchéité étanches disponibles sous la ref 37358
- Le kit contient 25 pcs : 5 fiches femelles, 10 cosses et 10 joints d'étanchéité

<http://product/37379>



Related Tools



Connector & Terminal Removal Kit | 7293

- Application: VW Group (Audi, Seat, Skoda, Volkswagen) vehicles.
- For use on MAF sensor, coil pack, headlight, fog light, level sensor and most terminal blocks on VAG vehicles.
- Designed for use on most push and pull style connectors.
- Also for releasing terminals junior and micro connectors.
- Ideal for use with the following Connect consumable products: Part Nos. 37361 - 37395 or Assorted Boxes, Part Nos. 37396 - 37399.